

SUPPLEMENTARY MATERIAL

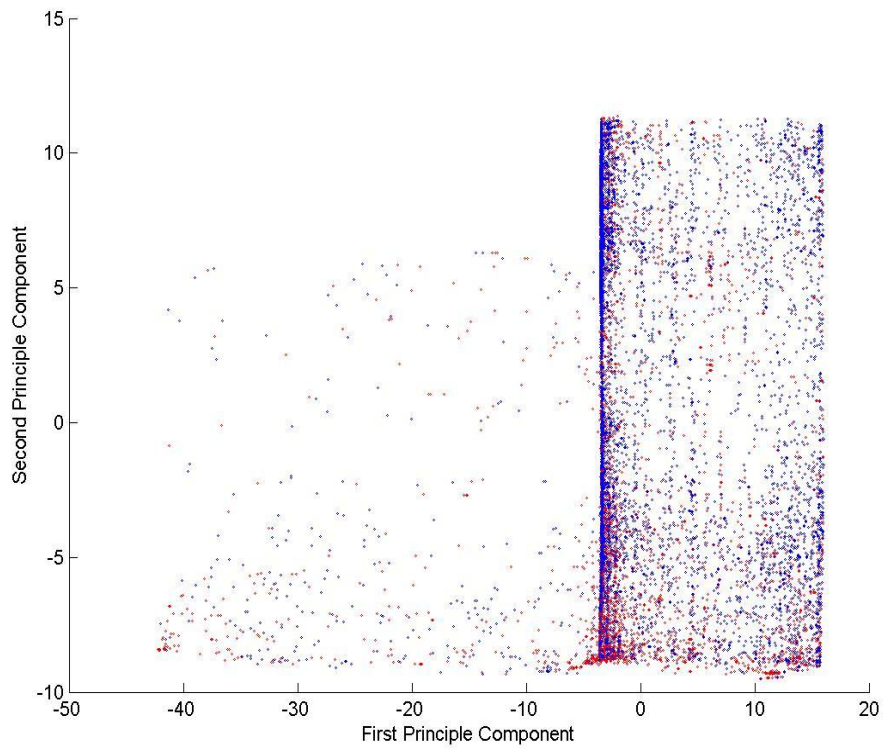


Figure 1: The projection of data on the first two principle components

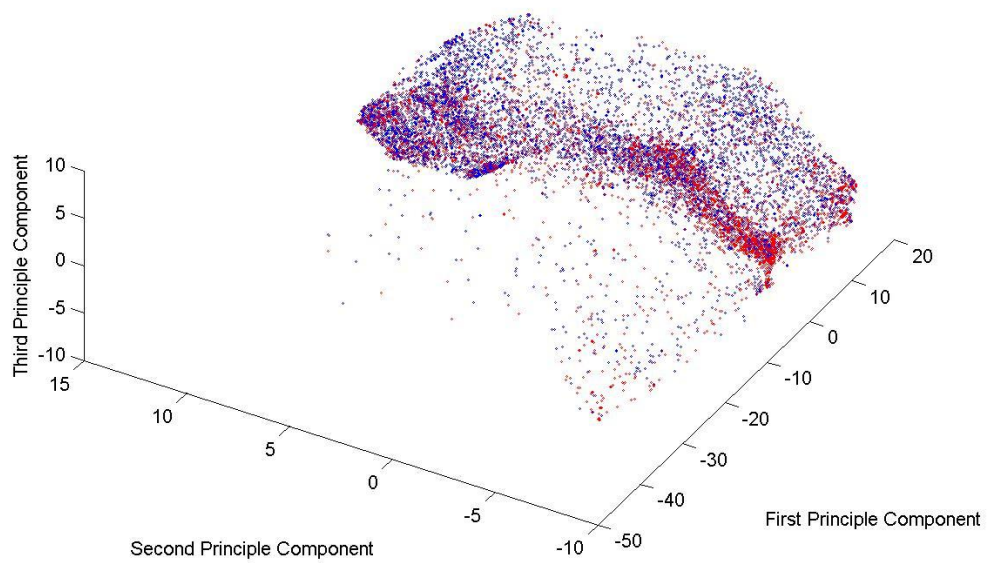


Figure 2: The projection of data on the first three principle components

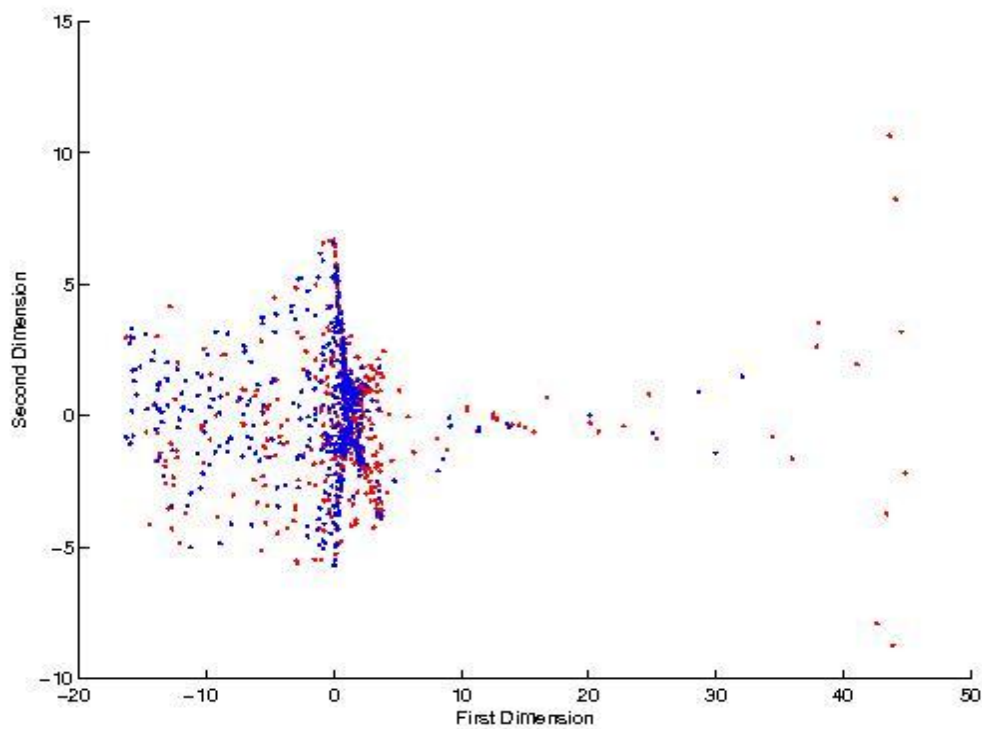


Figure 3: The projection of a subset of data using Multidimensional Scaling

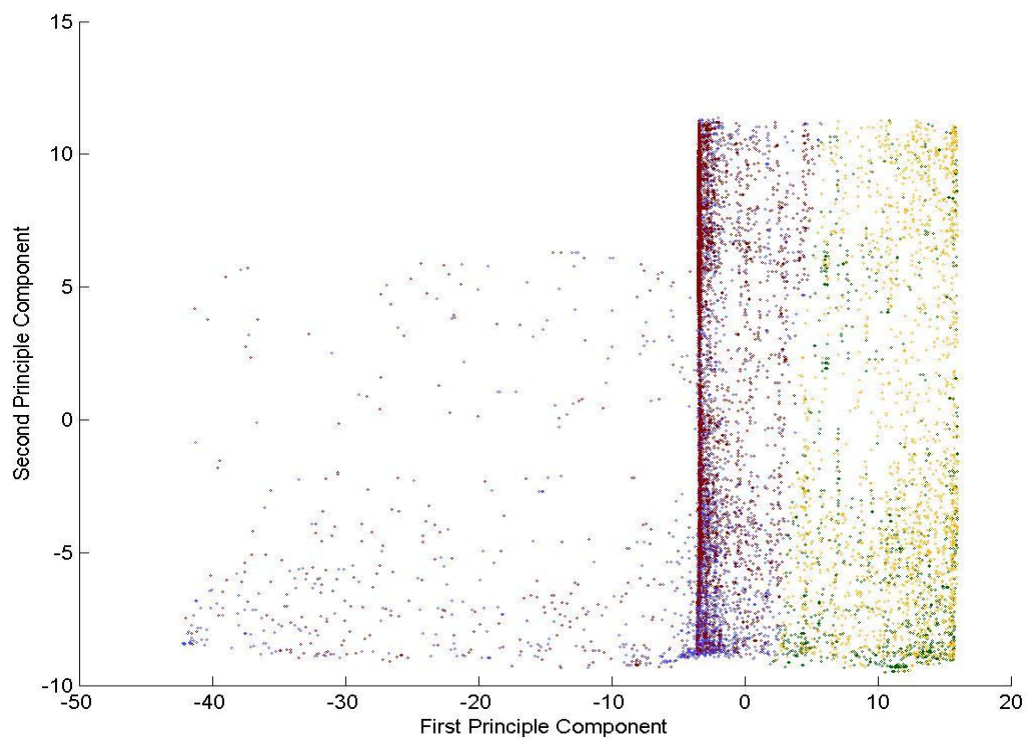


Figure 4: The projection of the data onto the first two principle components with a coloring depending on the k-means clustering results and the labels of the data

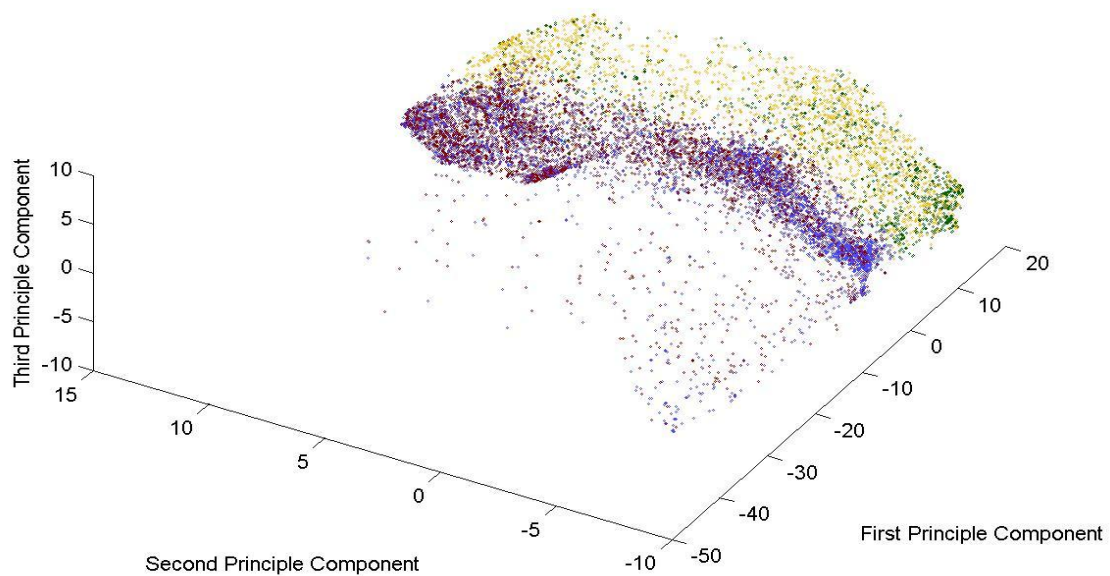


Figure 5: The projection of the data onto the first three principle components with a coloring depending on the k-means clustering results and the labels of the data

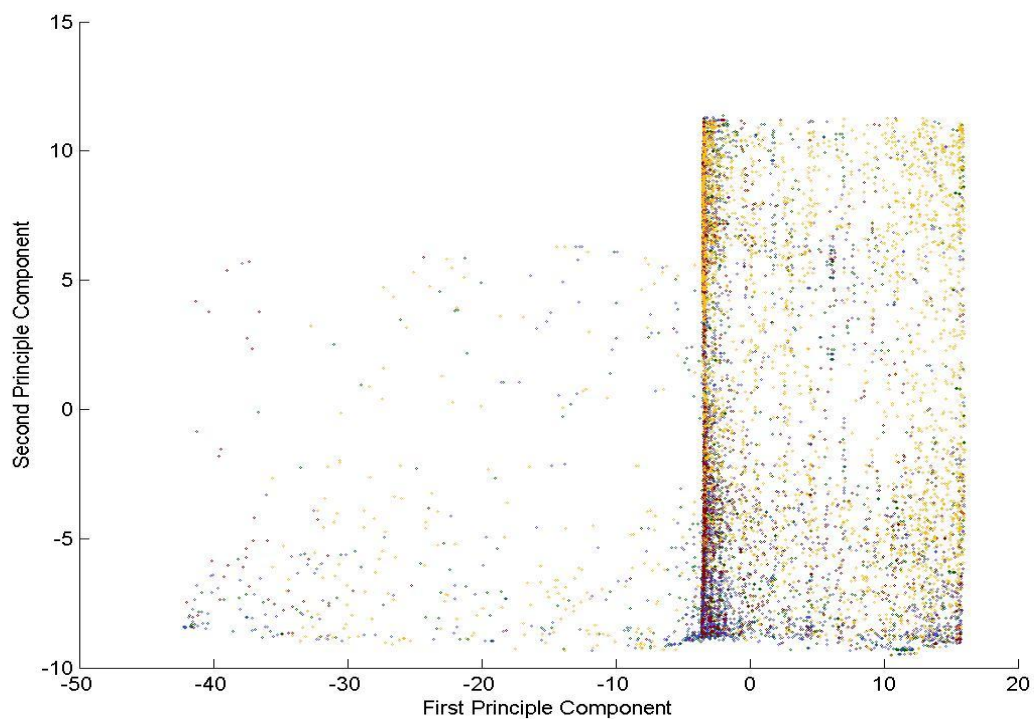


Figure 6: The projection of the data onto the first two principle components with a coloring depending on the clustering results performed by support vector machines and the labels of the data

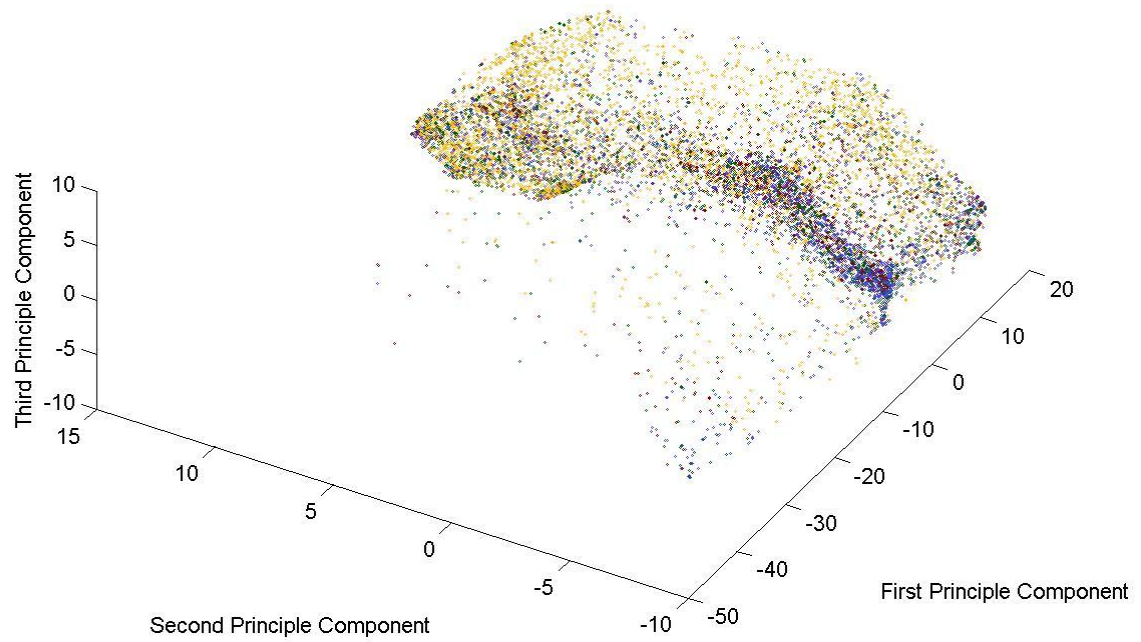


Figure 7: The projection of the data onto the first three principle components with a coloring depending on the clustering results performed by support vector machines and the labels of the data